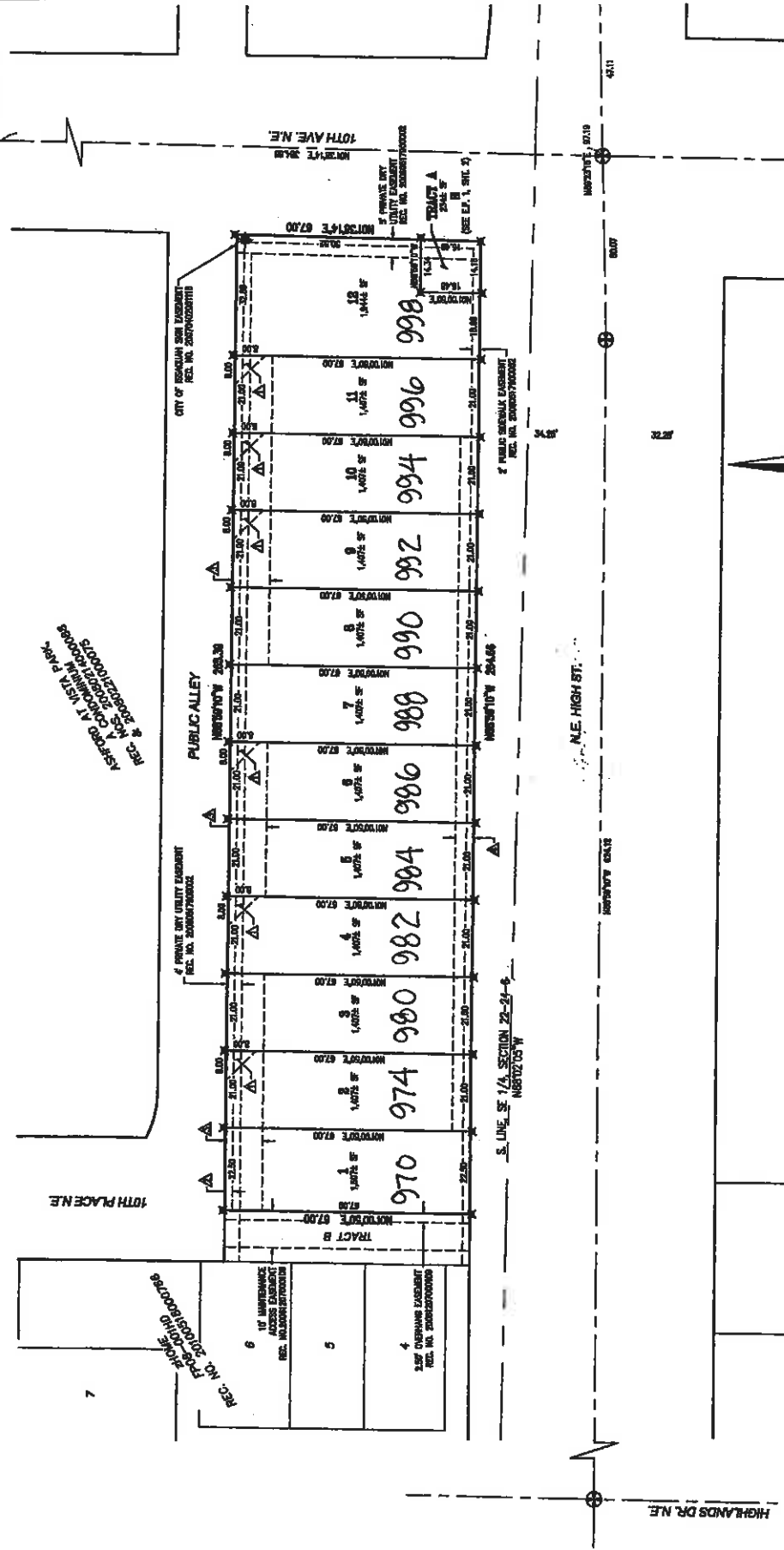


Final Plat of Issaquah Highlands Block 10A

A PORTION OF THE SE 1/4 OF THE SE 1/4, SECTION 22, TOWNSHIP 24 NORTH, RANGE 6 EAST, W.M.
CITY OF ISSAQUAH, KING COUNTY, WASHINGTON



ASSET NO. 1431 PARK
2000012000030000
REG. NO. 2000012000030000
REG. NO. 2000012000030000

LEGEND

- △ PRIVATE UTILITY EASEMENT (SEE EASEMENT PROVISIONS 1-4, SHEET 2)
- ▲ 240 FOOT WIDE PUBLIC ACCESS EASEMENT (SEE EASEMENT PROVISIONS 1-4, SHEET 2)
- ▲ 360 FOOT WIDE PRIVATE STORM DRAIN EASEMENT (SEE EASEMENT PROVISIONS 1-4, SHEET 2)
- ▲ 360 FOOT WIDE PRIVATE WATER EASEMENT (SEE EASEMENT PROVISIONS 1-4, SHEET 2)
- ⊕ MONUMENTS PLACED PER FINAL PLAT OF TOWN CENTER, ACCORDING TO SUBORDINATION, AND FINAL PLAT OF VETA PARK 2, RECORDING NO. 2000100000000000
- ✕ SET BACK IN LEAD WITH MARKERS STAMPED "CORE 41500" IN LEAD OF FRONT CORNER AT ALL POINTS ALONG PUBLIC UTILITY EASEMENT, PUBLIC ALLEY, EASEMENT FOR THE HIGHWAY AND SOUTHWEST CORNERS OF TRACT A
- ⊕ SEE GENERAL NOTE AS INDICATED ON SHEET 2
- ⊕ EASEMENT PROVISION AS INDICATED ON SHEET 2
- ⊕ CITY OF ISSAQUAH SIGN (APPROXIMATE LOCATION)

BASIS OF BEARINGS

ISSAQUAH ALONG THE SOUTH LINE OF THE SOUTHWEST CORNER OF SECTION 22, TOWNSHIP 24 NORTH, RANGE 6 EAST, W.M. PER CITY OF ISSAQUAH BOUNDARY LINE ADJUSTMENT NO. 11400-0000 (REG. 1)

REFERENCES

1. CITY OF ISSAQUAH BOUNDARY LINE ADJUSTMENT NO. 11400-0000, VOLUME 212 OF SURVEYS, PAGE 102, UNDER RECORDING NO. 2000000000000000
2. CITY OF ISSAQUAH SHORT PLAT NO. 9900-0000, VOLUME 204, PAGES 260 THROUGH 267, RECORDING NO. 2000000000000000
3. FINAL PLAT OF ISSAQUAH HIGHLANDS VETA PARK, VOLUME 204, PAGES 267 THROUGH 273, RECORDING NO. 2000100000000000

CORE DESIGN

ENGINEERING • PLANNING • SURVEYING

14711 N.E. 29th Pl. Suite 101
Bellevue, Washington 98007
425.686.7877 Fax: 425.686.7943

